



Fashion Science (Ningbo) Co.,Ltd

梵秦科技(宁波)有限公司

SPECIFICATION

产品规格书

ITEM 产品型号: MT02A-US2



目录

1. Description 产品介绍.....	3
1.1. General Description 产品描述.....	3
1.2. Product picture 产品图片.....	3
1.3. Features 产品特征.....	4
1.4. Application 产品应用场景.....	5
1.5. Product Dimension 产品尺寸.....	6
1.6. Product internal structure diagram 产品内部结构图.....	7
1.7. Product Parameters 产品参数.....	8
2. 2. Packaging 产品包装.....	9
2.1. Packaging Specification 包装规格.....	9
2.2. Packaging dimension 包装尺寸.....	9
2.2.1. inner box dimension 内盒尺寸.....	9
2.2.2. outer box dimension 外箱尺寸.....	10
3. Handling Precautions 产品使用注意事项.....	11



1. Description 产品介绍

1.1. General Description 产品描述

This product is Indoor 24-Hour Mechanical Timers, you can use to save energy and automate your appliances

本产品是室内 24 小时循环定时插座，你可以用它来节约能源和自动化你的家电。

1.2. Product picture 产品图片



注:标贴后续采用打标, 且内容根据客户需求调整



1.3. Features 产品特征

✓ Easy to use: pressing the toggle pins down for ON, or keeping them up for OFF.

简单易用: 设定定时按下设定片设置通电, 或者设定片拉上设置断电即可。

✓ SAVE ENERGY & MONEY: Our mechanical timer plug outlet can be used to automate most small home appliances. Use on your fans, lamps, hydroponics, coffee machines, grow light, reptile light, fish tank, aquarium and more.

节省能源和金钱: 我们的机械计时器插头插座可用于大多数小型家用电器的自动化。使用在你的风扇, 灯, 水培, 咖啡机, 生长光, 爬行动物光, 鱼缸, 水族箱和更多。

✓ AUTOMATE YOUR HOME OR OFFICE: Turn on and off lamps, small appliances, Electronic billboard, Christmas trees, and other electrical devices with a handy 24 hour lamp timers for electrical outlets.

使家庭或办公室自动化: 在电源插座上安装一个方便的 24 小时灯定时器, 开关灯、小家电、电子式广告牌、圣诞树和其他电子设备。

✓ VERSATILE & CUSTOMIZABLE: Each pin represents 30 minutes for added customization. Set up to as many as 48 ON/OFF programs to automate your home appliances. Automatic light timer for indoor lighting can also be used as an interval timer.

多功能和可定制: 每个引脚代表 30 分钟的额外定制时间。设置多达 48 个开/关程序, 使您的家电自动化。用于室内照明的自动光计时器也可以用作间隔计时器。

✓ SAFE & RELIABLE: Featuring fireproof material, durable construction, our AC plug in mechanical timer is guaranteed for safety and quality, 1 Year Warranty & professional customer services provided.

安全可靠: 采用防火材料, 耐用的结构, 我们的机械定时插座保证安全和质量, 提供 1 年保修和专业的客户服务。

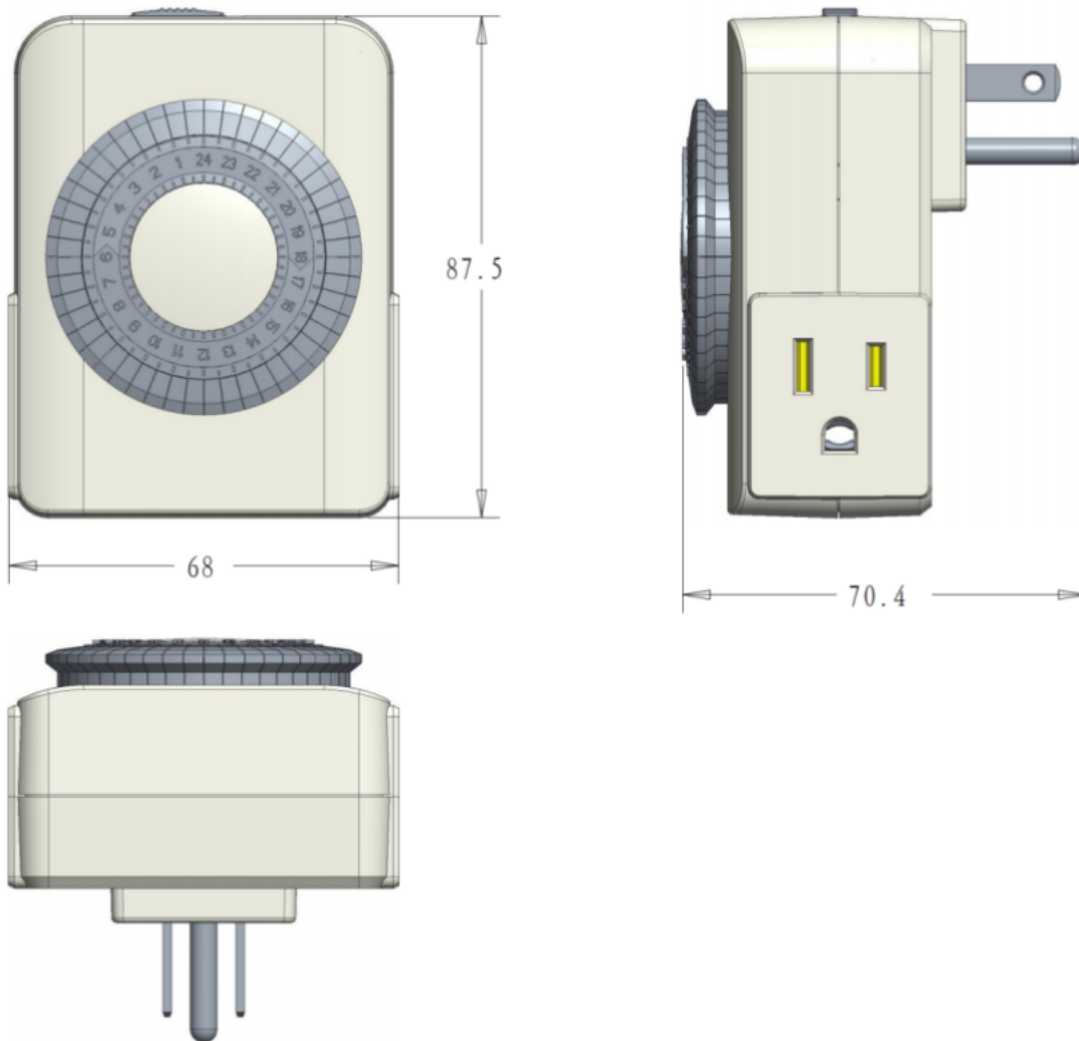


1.4. Application 产品应用场景

- Lighting 灯
- Digital advertising display 电子广告牌
- Fans 风扇
- Hydroponics 水培
- grow light 生物光灯
- reptile light 爬行动物光
- fish tank 鱼缸
- Aquarium 水族箱
- Humidifiers 增湿器
- Nebulizers 喷雾器
- Indoor sprinklers 室内洒水装置
- Ventilators 通风装置
- electric mosquito repellent 电蚊香
- other electrical devices 其他电子设备



1.5.Product Dimension 产品尺寸

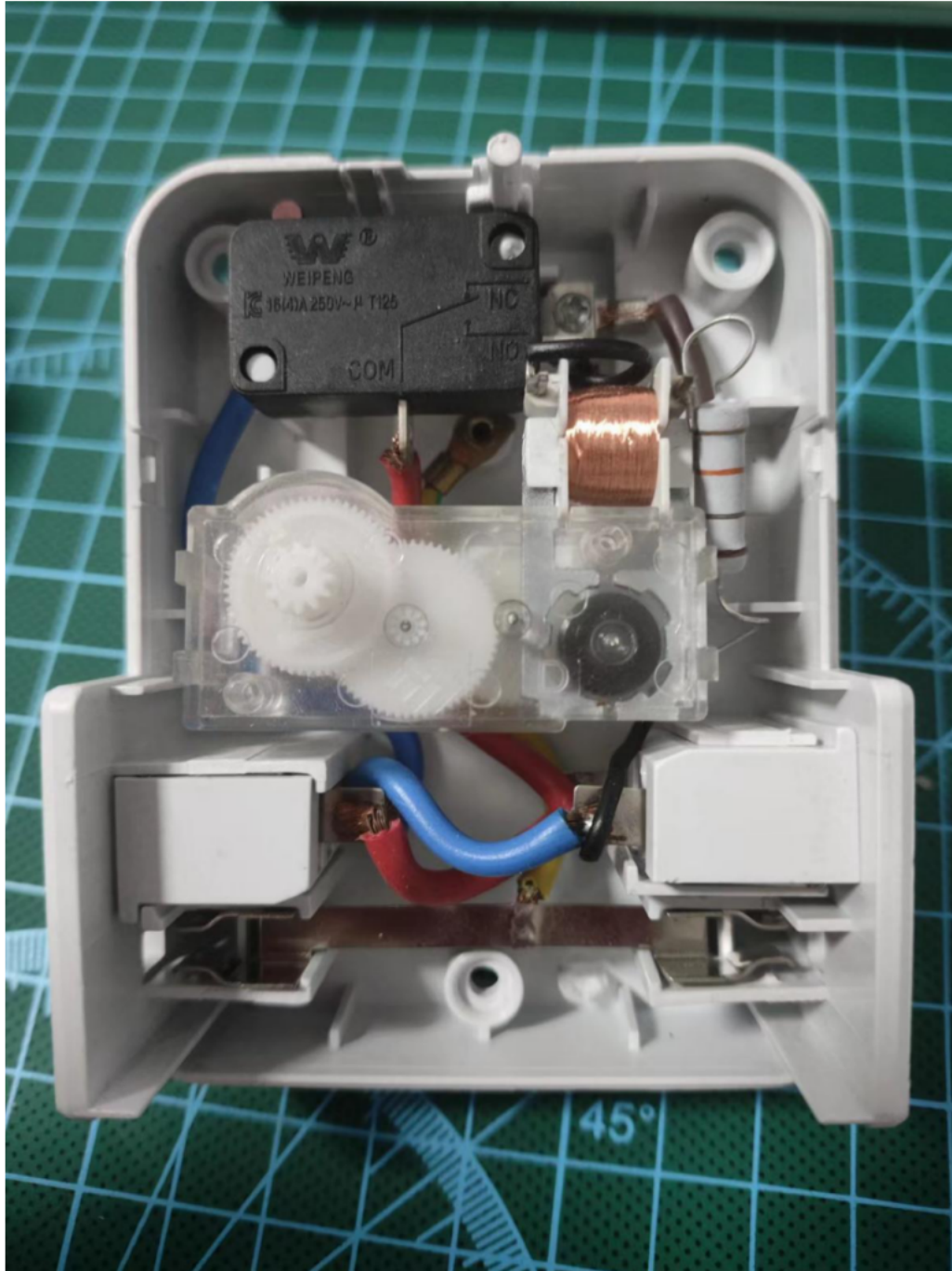


Notes 备注:

1. All dimensions units are millimeters. 所有尺寸标注单位为毫米



1.6.Product internal structure diagram 产品内部结构图



1.7.Product Parameters 产品参数

Parameters 参数名称	Value 参数值
Power Input 电源输入	125Vac, 60Hz
Power Output 电源输出	1875W (Resistive) 电阻性负载功率 1250W (Tungsten) 钨丝灯负载功率 15A, 1/2HP 15 安培, 1/2 马力
Number of Outlets 输出插座数量	2 Grounded Outlet 2 个带接地插座
Operation Temperature 工作温度	-10° C to +55° C
Min Setting Time 最小定时时间	30 Minutes 30 分钟
Max Setting Time 最大定时时间	24-Hour 24 小时
Max Setting groups 最多设置组	48 ON/OFF
IPLevel 防水等级	IP20
Timing start-stop Accuracy 定时启停精度	±10 min
Continuous supply Accuracy 持续供电精度	± 5min

2.2. Packaging 产品包装

2.1. Packaging Specification 包装规格

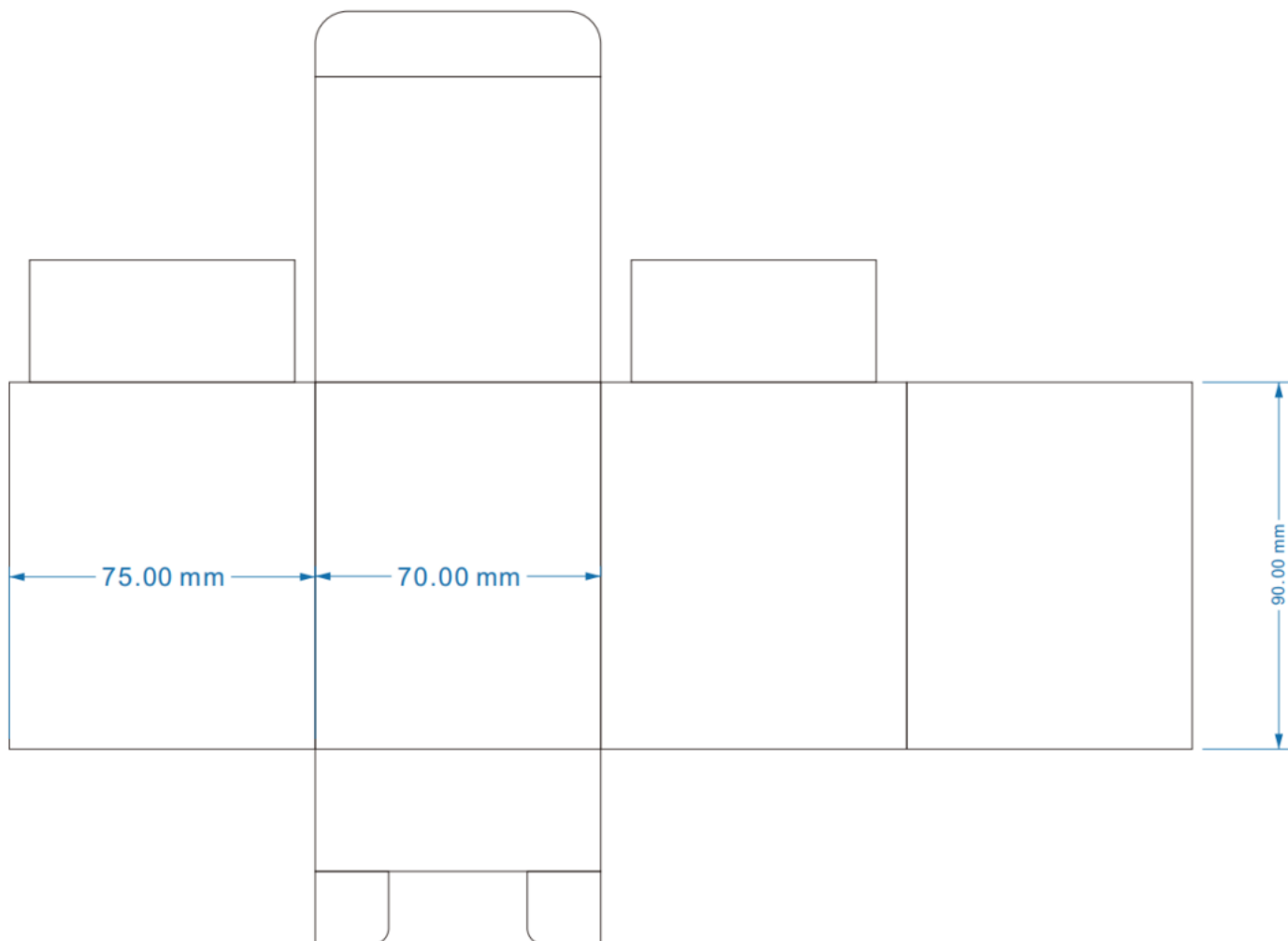
- 100pcs/box 每箱 100 个
- Product inner box use 350g standard white cardboard

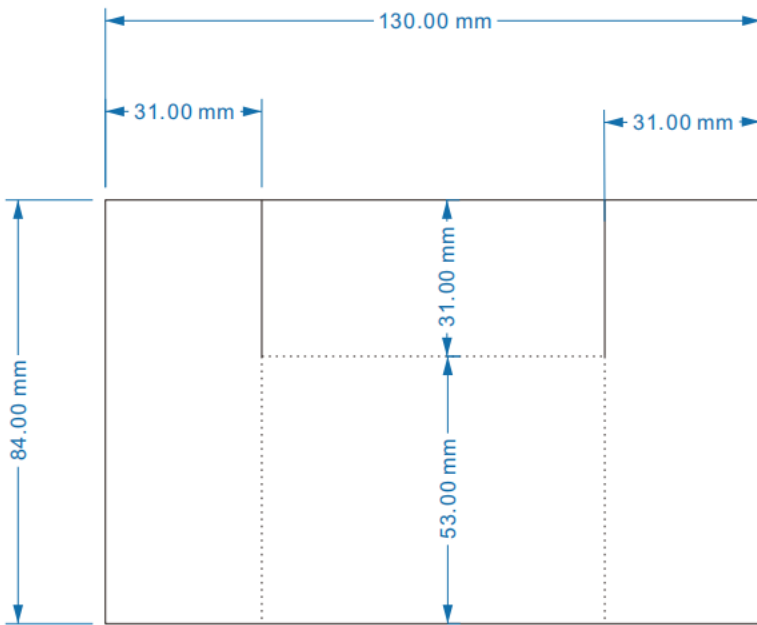
产品白盒包装，材质为 350 克标准白卡纸

- Double corrugated outer box 双瓦楞外箱

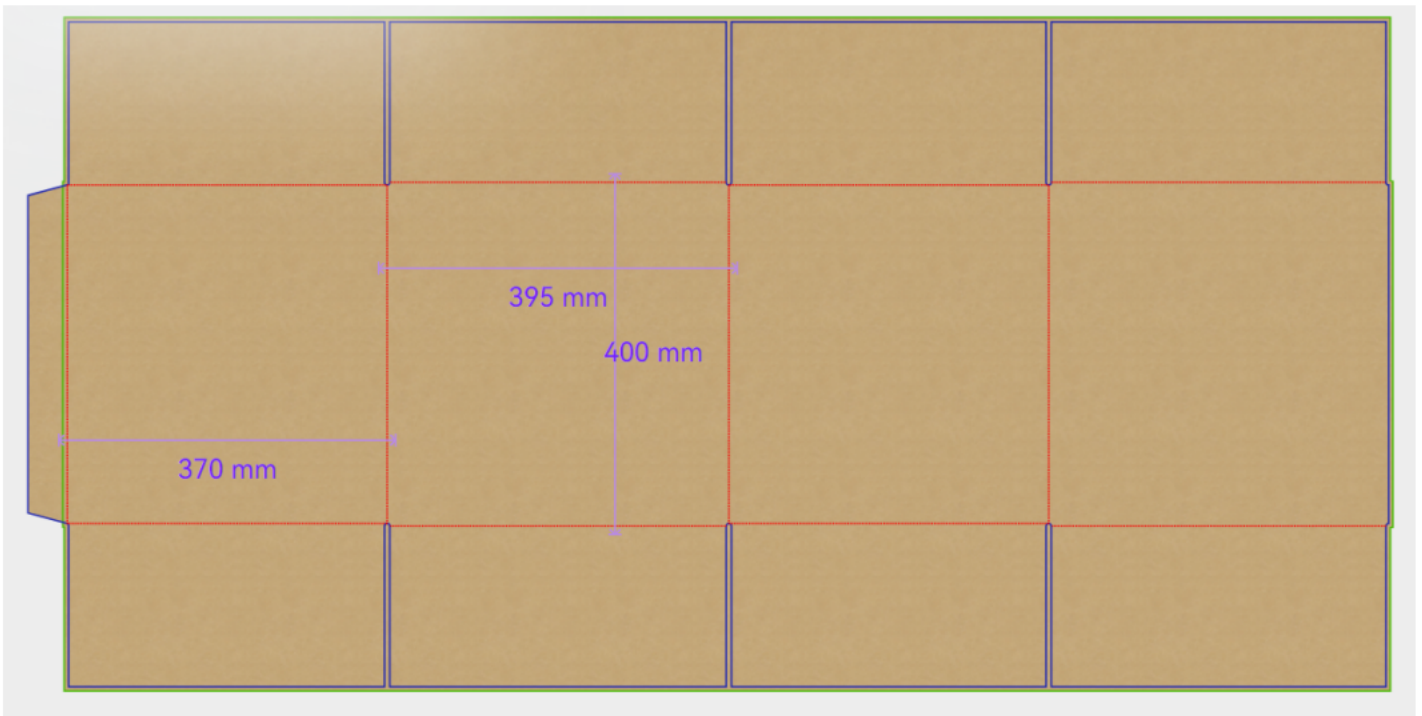
2.2. Packaging dimension 包装尺寸

2.2.1. inner box dimension 内盒尺寸





2.2.2. outer box dimension 外箱尺寸



37*39.5*40cm

3. Handling Precautions 产品使用注意事项

- For indoor use only. 仅供室内使用
- Fan heaters and heaters with exposed components should not be left unattended, and it is recommended that such appliances not be connected to timers.

电热扇和带有外露部件的加热器不应无人看管，建议这类电器不要连接定时器。

- Do not use to control appliances that contain heating elements such as cooking appliances, heaters, irons, etc. 不要用来控制含有加热元件的器具，如炊具、加热器、熨斗等。
- Do not exceed electrical ratings. 不要超过额定电流
- Always ensure that the plug of any appliance is fully plugged into the timer.

始终确保任何电器的插头完全插入定时器

- If you need to clean the timer, remove it from the power supply and wipe it with a dry cloth. Do not soak in water or any liquid.

如果需要清洁定时器，请将其从电源上取下并用干布擦拭。不要浸泡在水或任何液体中。